

Chart 1: Representation of the sample by age

Total sample: 50 women

- Unknown age: 7 (14%)
- Group at highest risk: 15-21 years (50%)
- Group at high risk: 21-30 years (20%)
- Group at considerable risk: 30-40 years (16%)

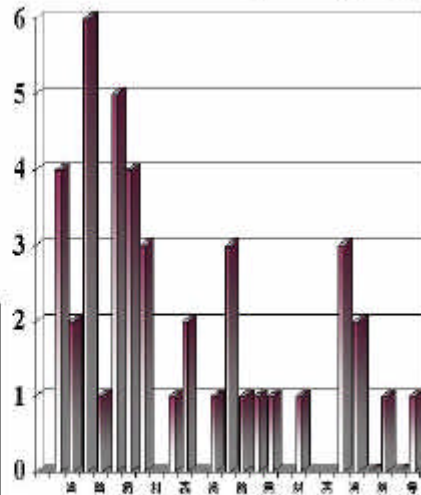
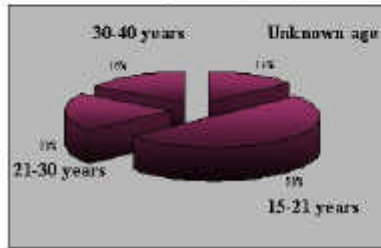


Chart 2: Family Background

Information from 23 women (46%)

Unknown: 27 (54%)

- General number of women who experienced domestic violence (DV): 10 (43,5%)
 - Domestic violence in the generic family: 4 (17%)
 - Domestic violence with incest in the generic family: 3 (13%)
 - Domestic violence with incest in the generic family and sexual violence in the late childhood: 3 (13%)
- Separated/divorced parents (D) 3 (13%)
- Orphans (O) (without both of the parents) 1 (4,3%)
- With single parent (SP): 6 (25,7%)
 - With a single mother and more than 3 siblings: 2 (8,7%)
- With traditional nuclear family (ISP): 3 (13%)

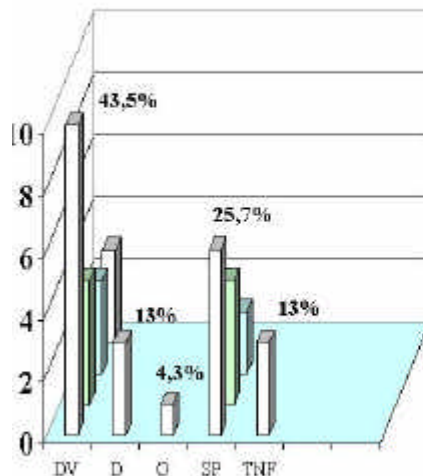
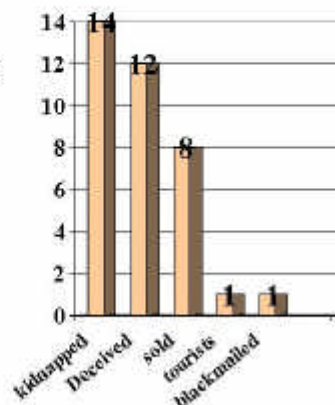


Chart 3: How the women were involved in trafficking

1. Through kidnapping on the street: 14 (38,9%)
2. Deceived for a better life and job: 12 (33,3%)
3. Sold by relatives, boyfriends or husbands: 8 (22,2%)
4. Arrived as tourists: 1 (2,8%)
5. Blackmailed: 1 (2,8%)



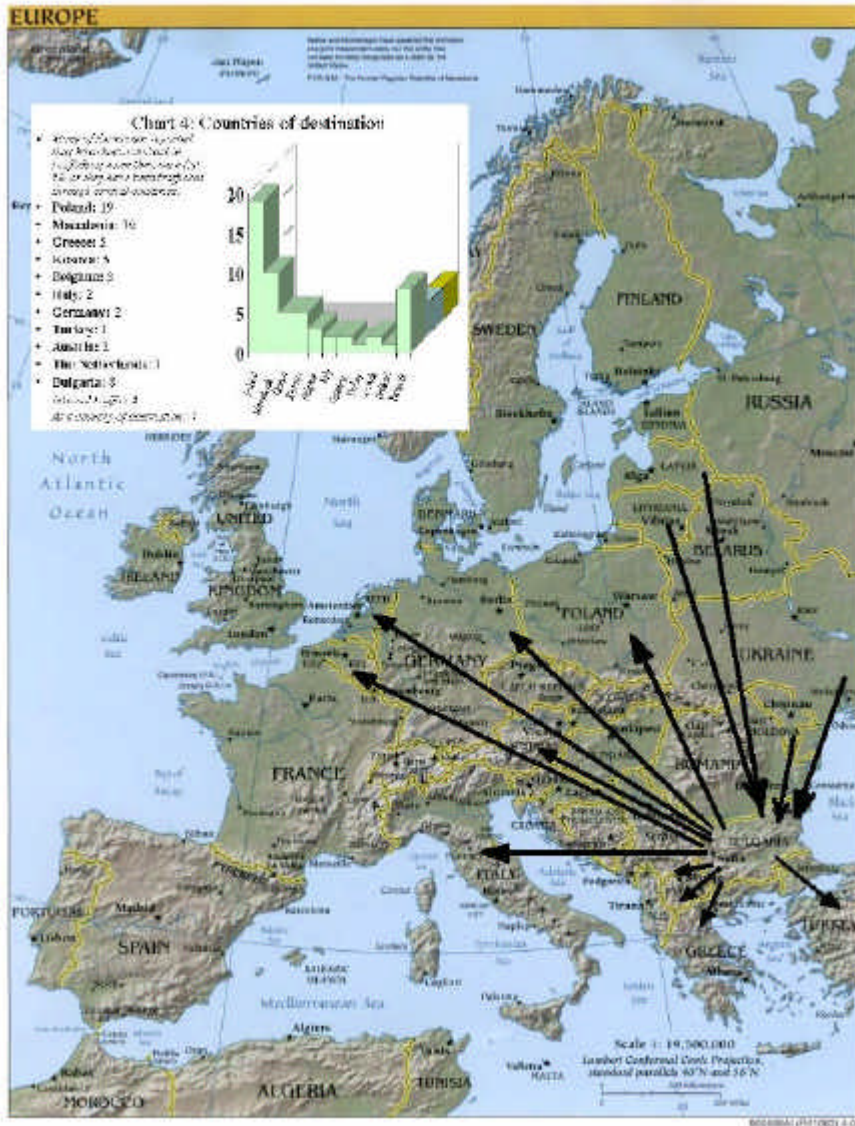


Chart 5: How the survivors escaped

Known: 36 (72%).

- *By herself, with the support of accidental people:* 12 (33,3%)
- *Police, military structures:* 22 (61,1%)
- *Relatives:* 2 (5,6%)



Total sample

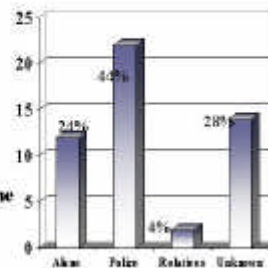


Chart 6: How the clients reached Animus/La Strada

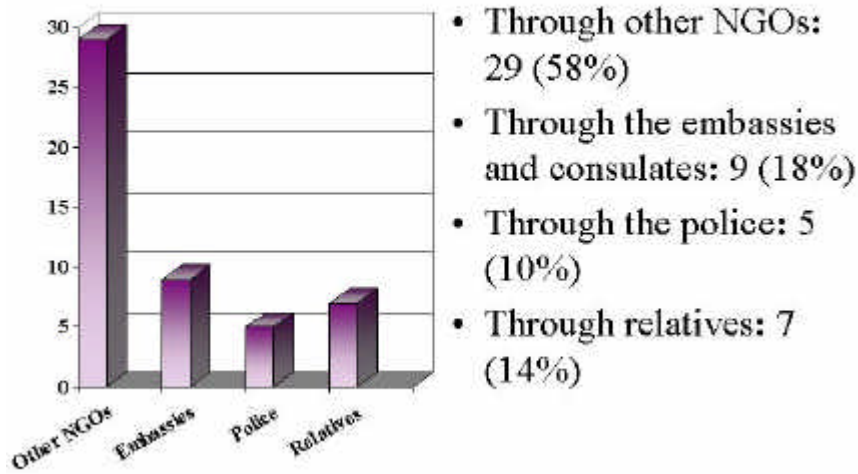


Chart 7: HELP-LINE DATA

Total number of calls: 509 Juxtaposition of the 3-year work

1. Calls from possible victims: 191 (37%)
2. Calls from Victims: 49 (10%)
3. Calls from Relatives: 163 (32%)
4. Other Calls: 106 (21%)

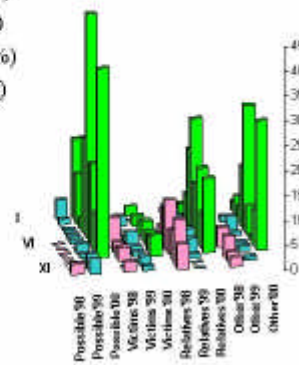
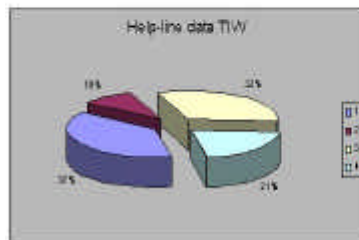


Chart 8: Services used by the clients

